

CHOC LATERAL
SIDE CRASH



QUIZ : quel occupant est le plus sollicité ? which occupant is the more sollicitee ?



Side Pole

▲
MEGANE 2015

●
MEGANE E 2022



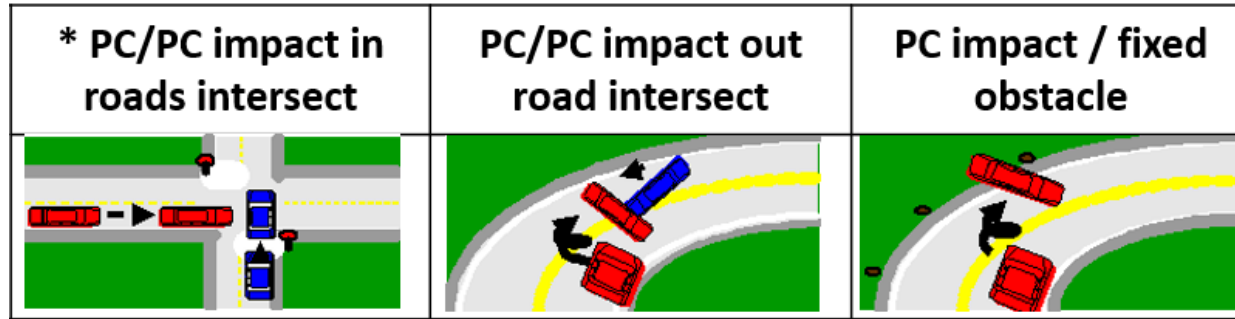
Side Pole

◆
SIMILAIRES / SIMILAR

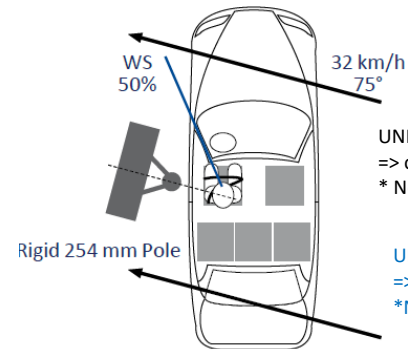
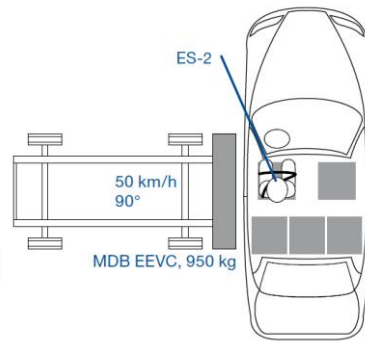
Les configurations de crash en latéral (zone Europe)

The side crash configurations (European area)

* PC : Passenger car



UNR-95

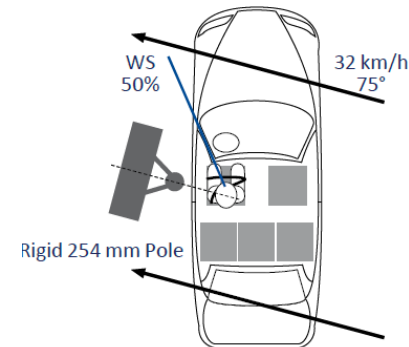
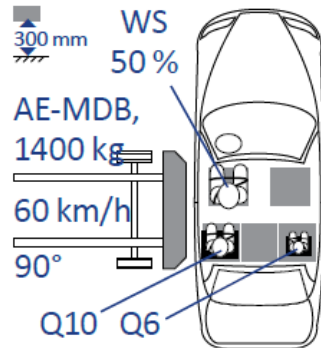


UNR-135
=> obligatoire pour l'ensemble des véhicules* depuis juillet 2024
* Non concerné : certains véhicules Utilitaires ou véhicules spéciaux

UNR-135
=> Mandatory for sale new car* since July 2024
*Not concerned : specific utility vehicles or special vehicles

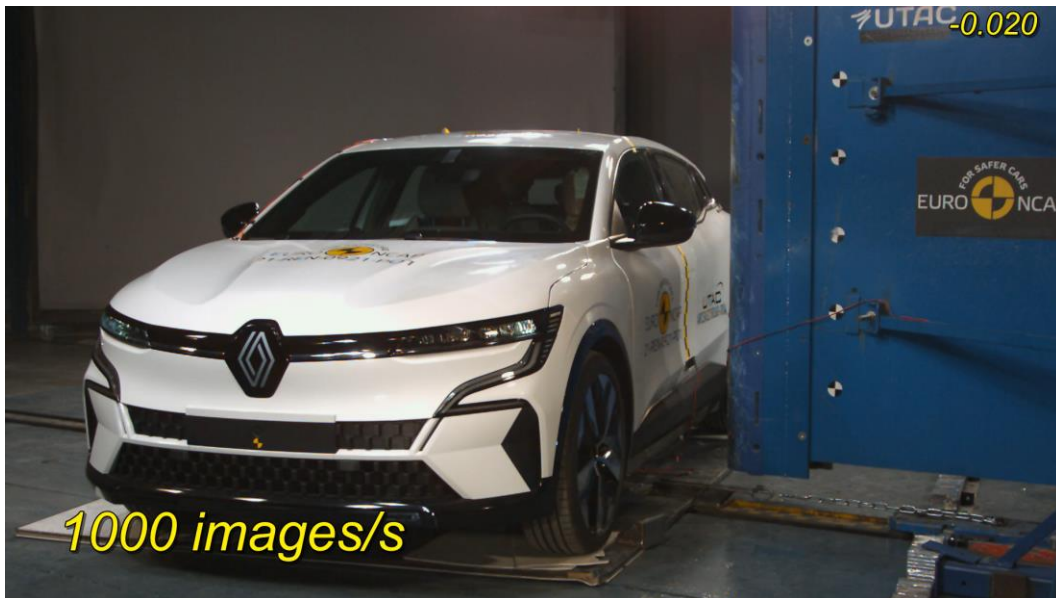
+450kg
+10km/h

AEMDB60



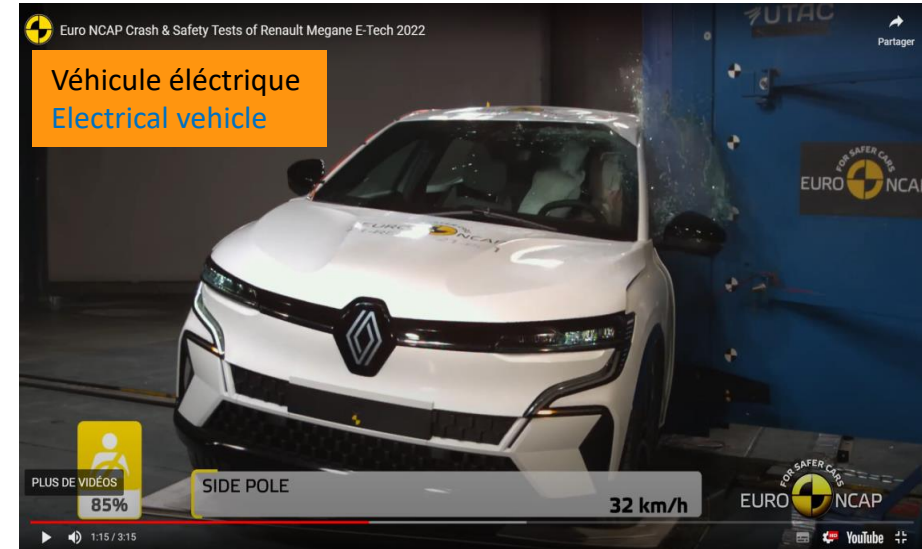
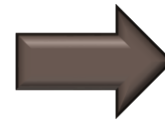
Crash latéraux standard en vidéo

Standard side crash movies



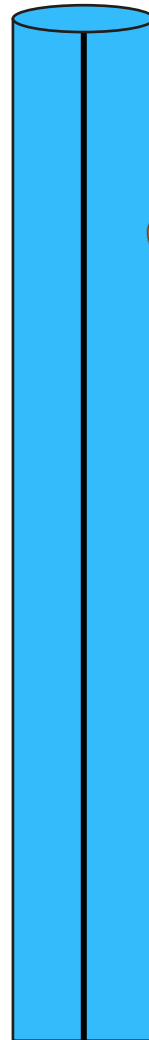
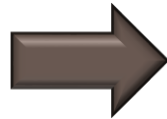
Évolution du profil de déformation structure véhicule en choc « poteau 32 km/h »

Evolution of the vehicle structure deformation in crash « Pole 32 k.p.h »



Effets possibles des renforcements structure sur l'occupant

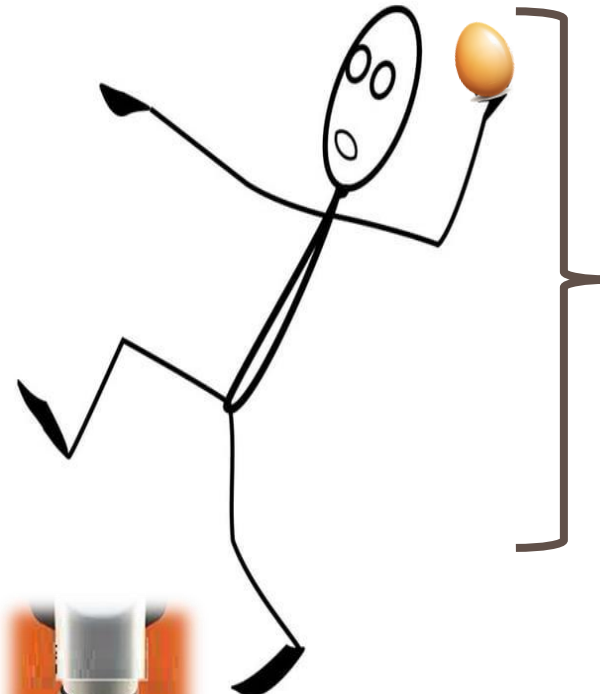
Possible effects of structural reinforcements on the occupant



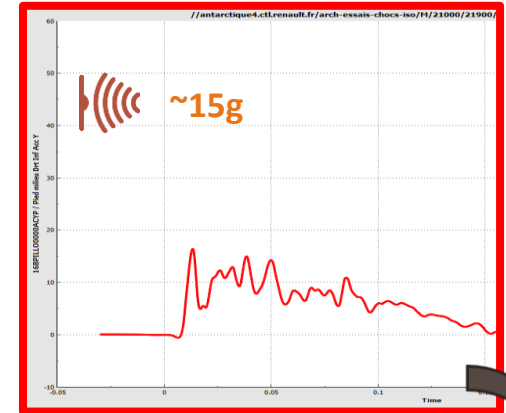
Thermal



Electrical

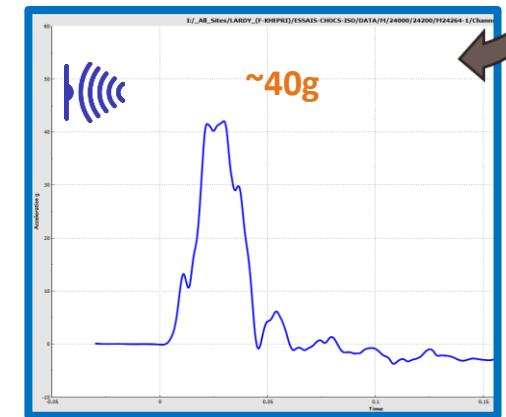


Risque de lésion non visible
Risk of non-visible injury



Side Pole

*2,5



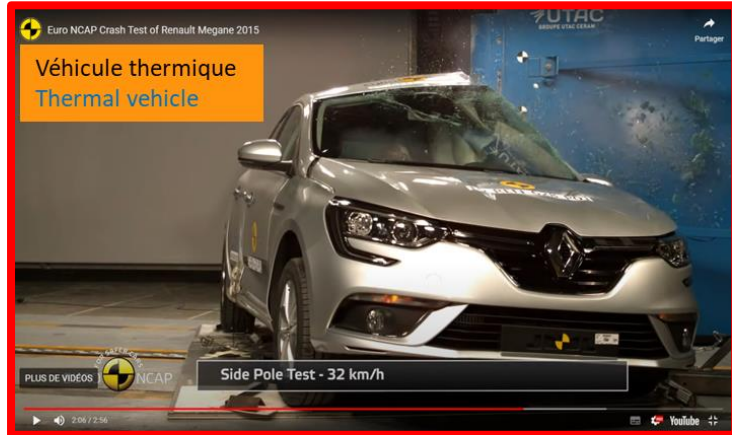
Side Pole

Effet de la vitesse d'impact en fonction du type d'énergie du véhicule

Effect of impact speed depending on the vehicle energy type

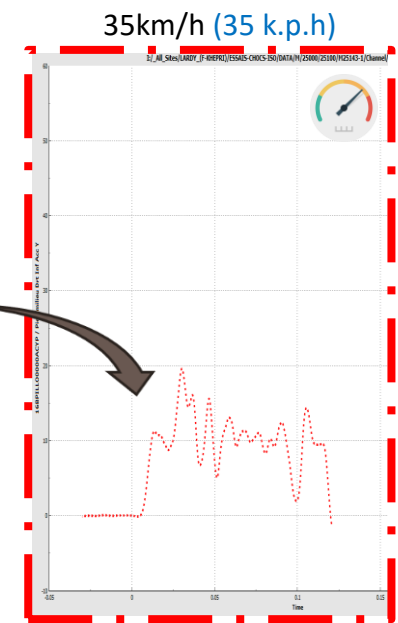
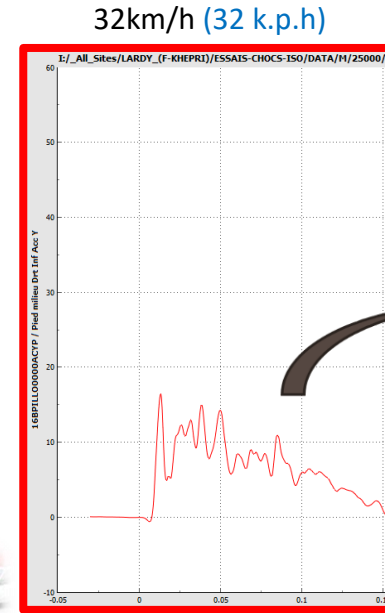
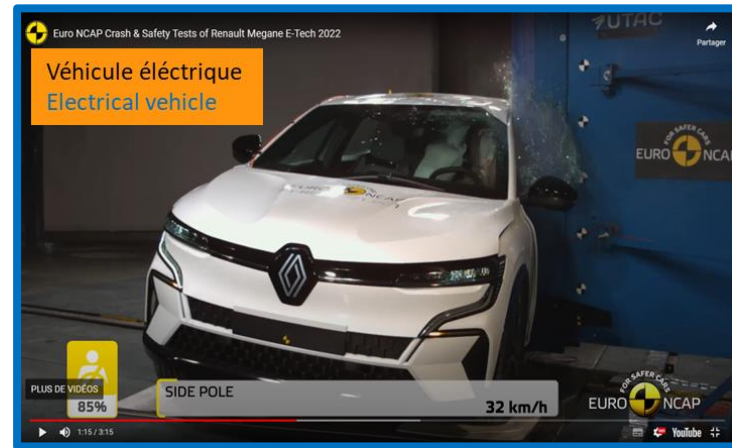
32km/h (32 k.p.h)

35km/h (35 k.p.h)

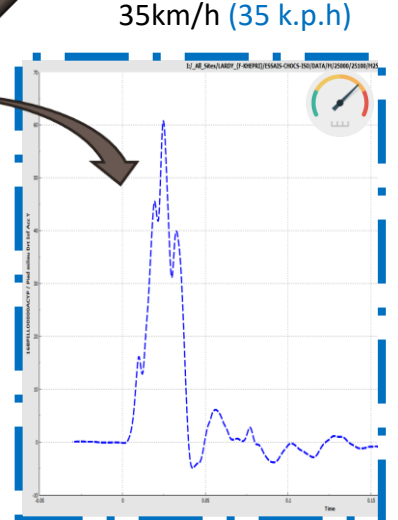
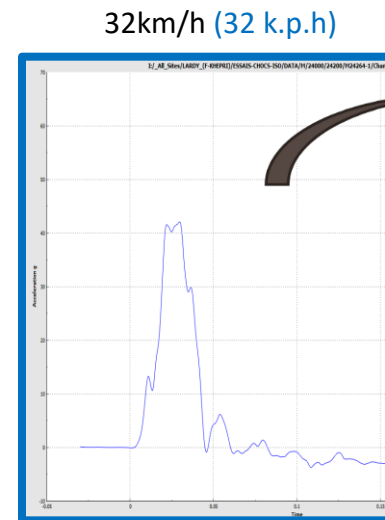


32km/h (32 k.p.h)

35km/h (32 k.p.h)



+30%



+50%

Suggestion d'observation en choc latéral

Suggestion for observation in side impact



Crash Latéral
Side crash

L'airbag central est-il déployé?
Airbag farside deployed ?



NEW
EQUIPMENT
ARRIVAL 😊

2 occupants
en place
avant?
2 occupants
in front
row?



Un seul
occupant en
place avant ?
Only one
occupant in
front row?

